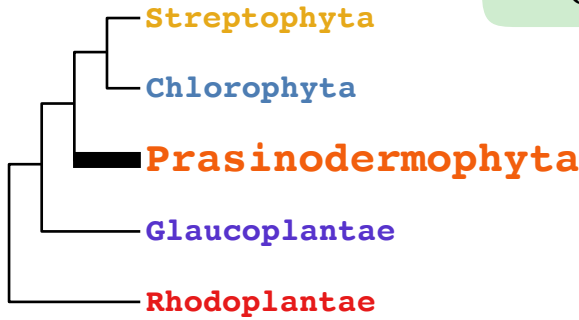


rRNA Synapomorphies of the **Prasinodermophyta**, to the exclusion of Chlorophyta, Streptophyta, Glaucoplantae and Rhodoplantae



28S rRNA - Helix G4 [H2093]

bp 11: U-A ==> U x C

NHS (non homoplasious synapomorphy)

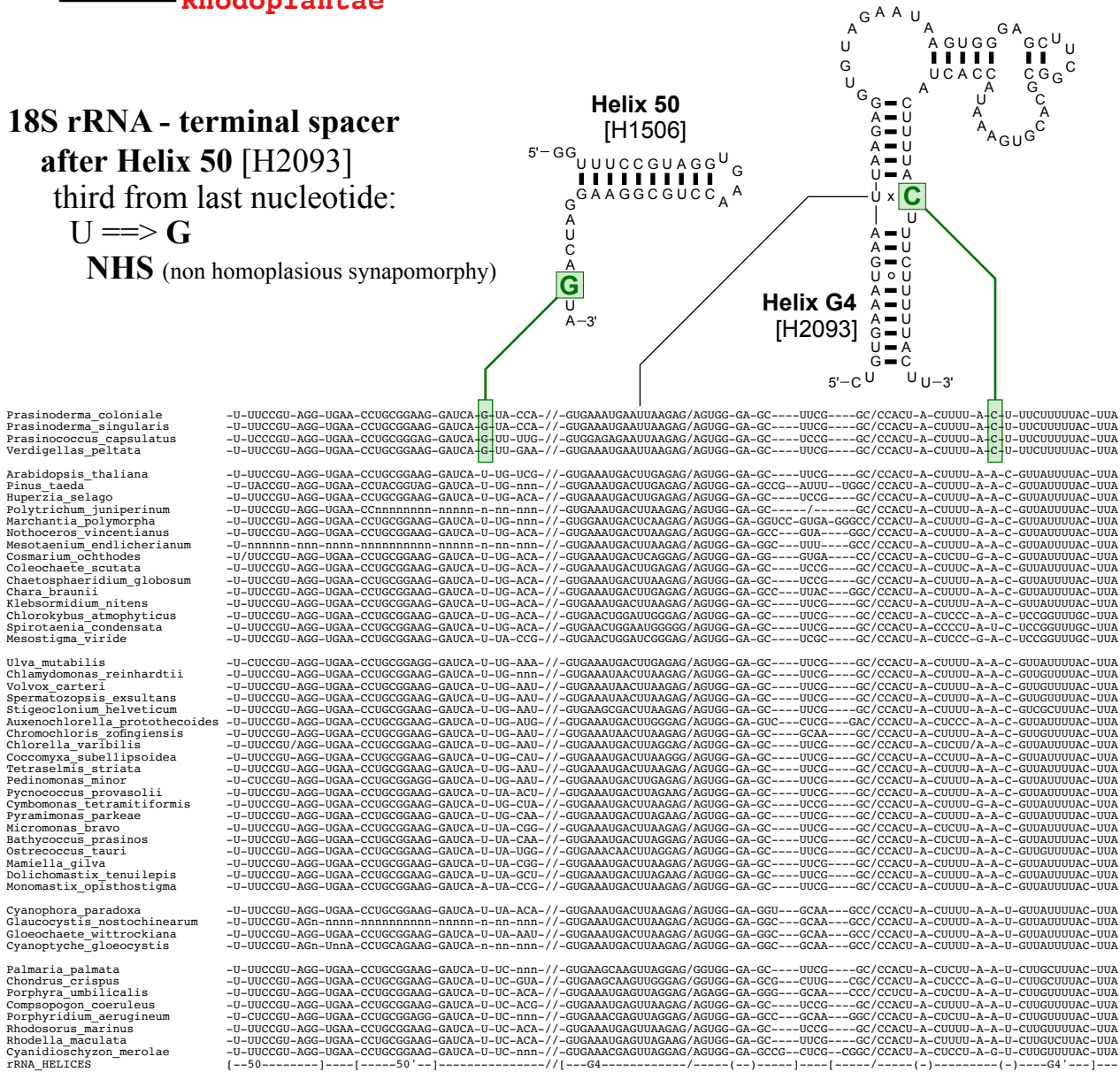
18S rRNA - terminal spacer

after Helix 50 [H2093]

third from last nucleotide:

U ==> G

NHS (non homoplasious synapomorphy)



**Prasino-
dermophyta**

Streptophyta

Chlorophyta

Glaucoplantae

Rhodoplantae

Viridiplantae